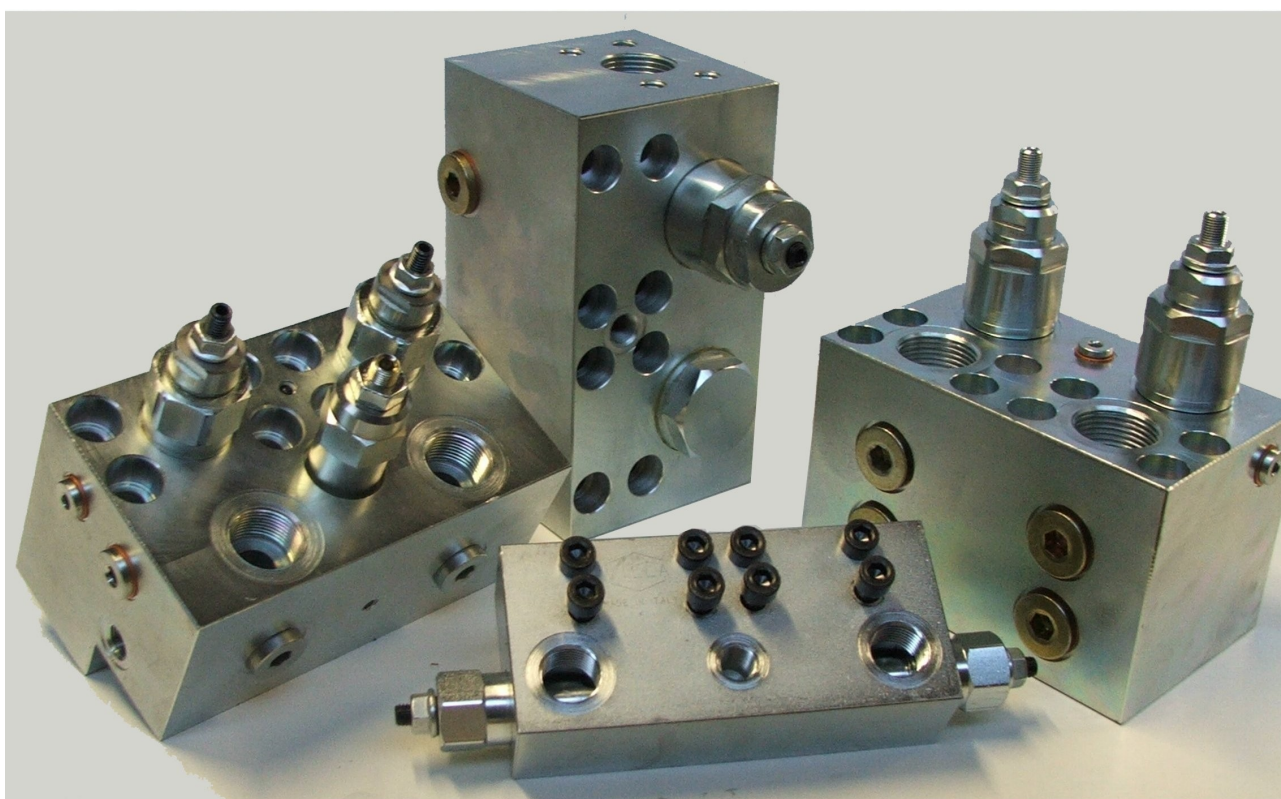
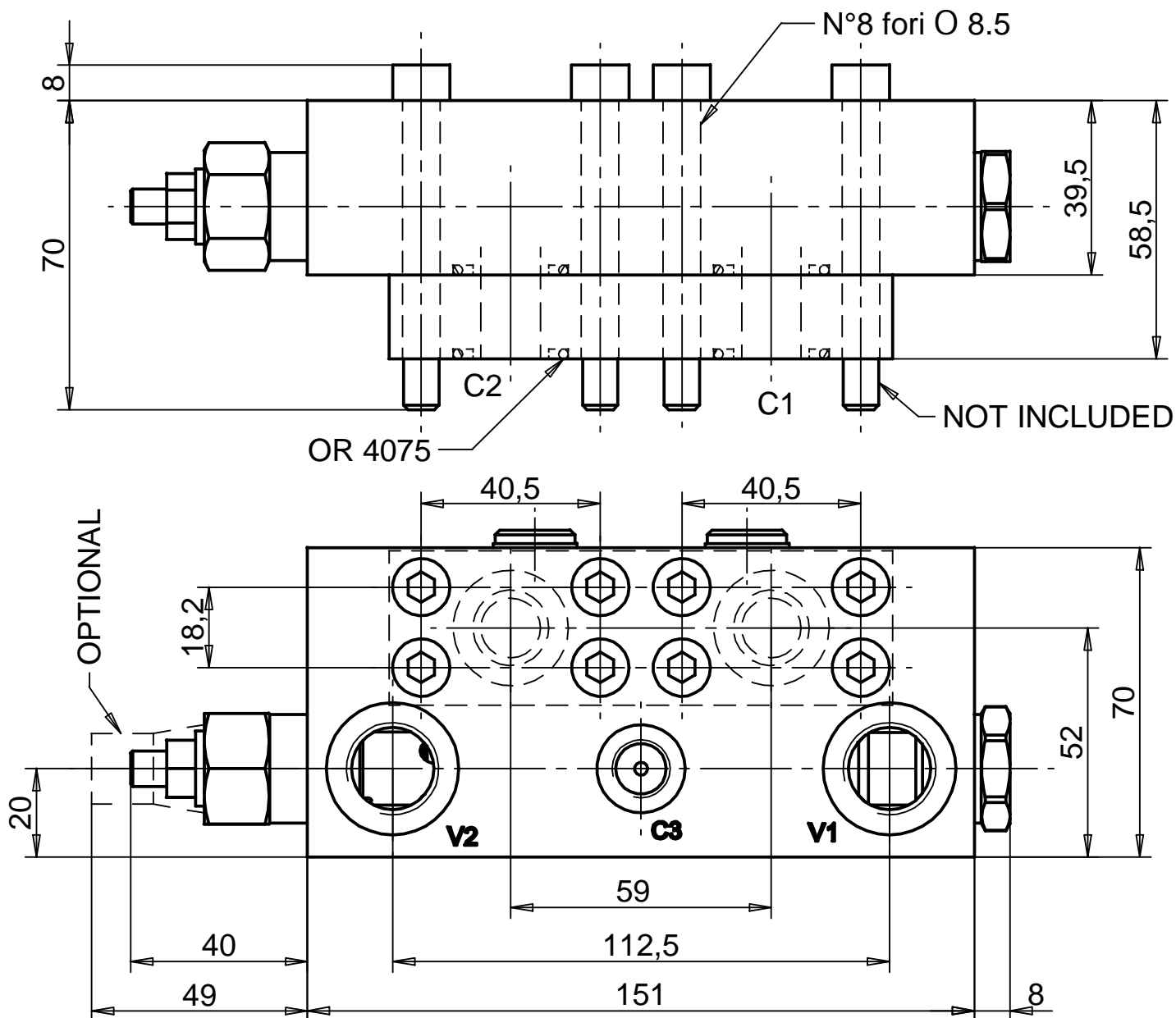


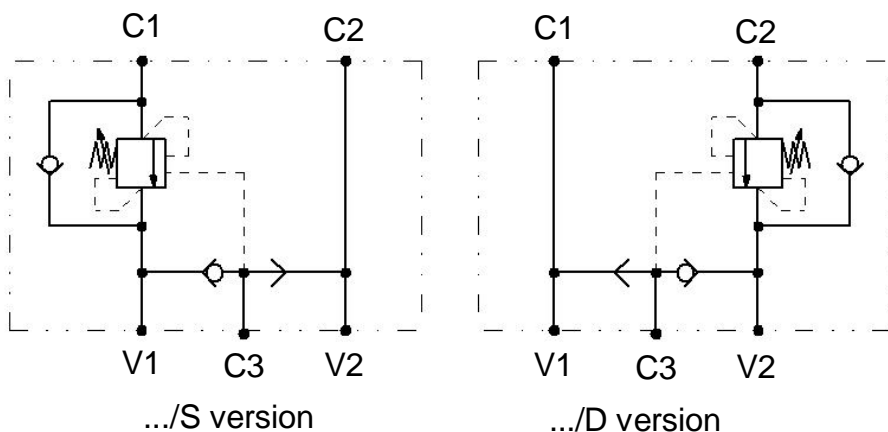
## Valvole per motori Idraulici Flanged motor valves



M.G.H. srl - Via G. Bovini, 43/8 - 48123 Ravenna-Italy  
Tel. +39/0544/502431  
Mail: [info@mghsrl.eu](mailto:info@mghsrl.eu)



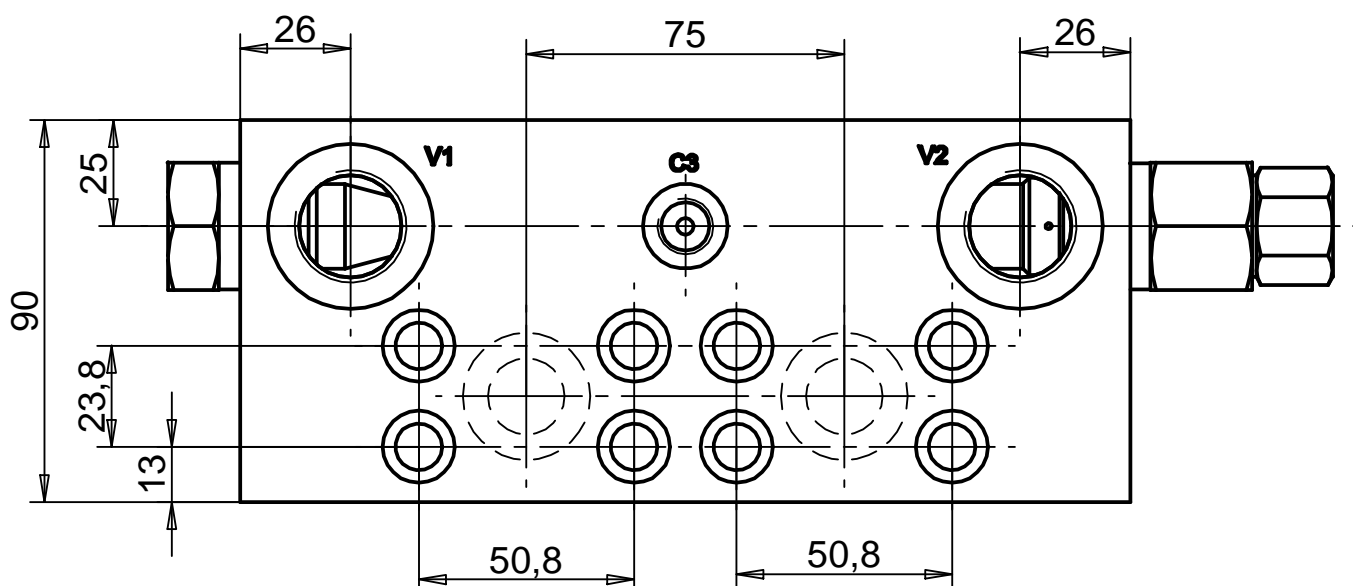
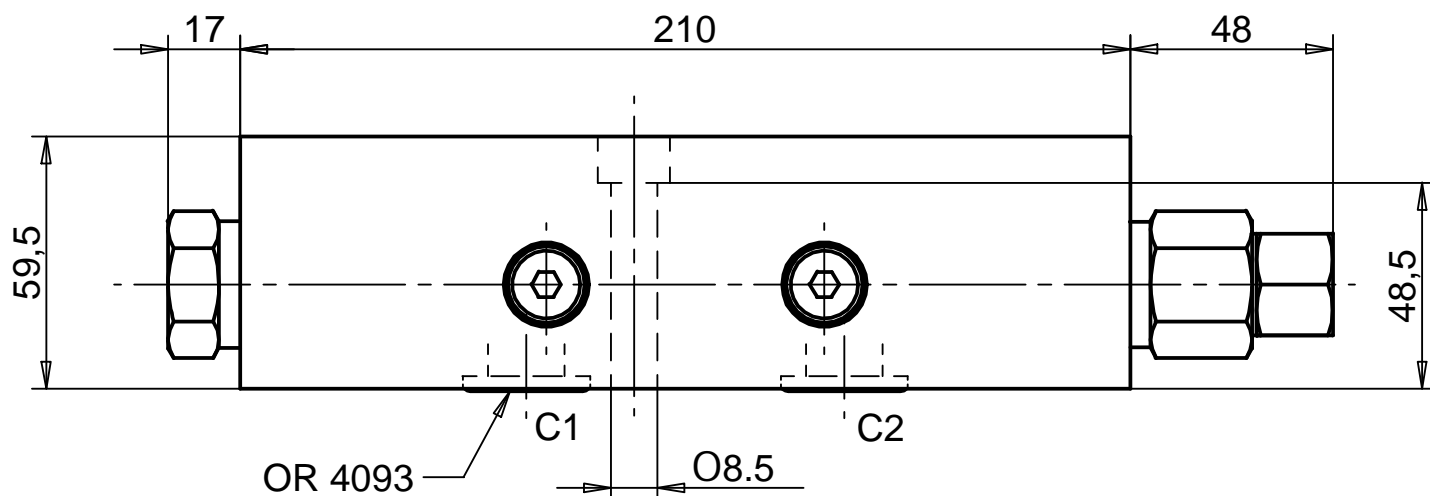
ATTACCHI / PORTS	
V1 - V2:	G 1/2
C1 - C2: 1/2 SAE 6000	
C3:	G 1/4



Pressione max. (bar)	
250:	Aluminium body
350:	Zinc plated steel body (Ord. code: A-...)

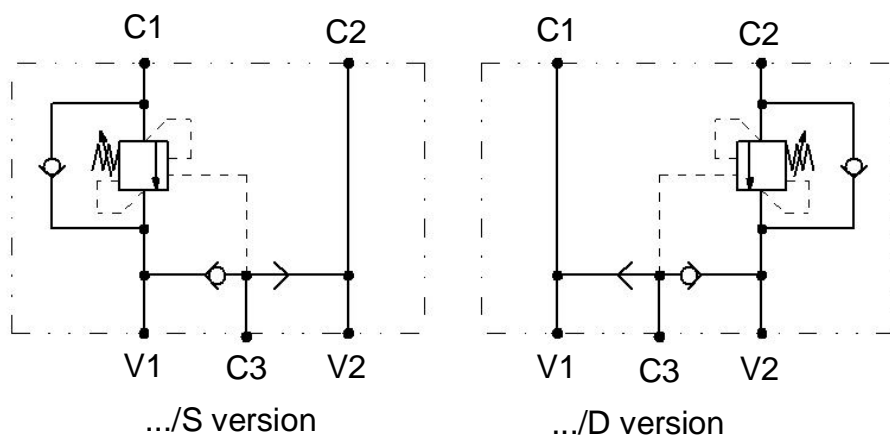
Rapp. pilot.	
4,2:1	STANDARD
11:1	On request

Portata max. (l/min)	
60	



ATTACCHI / PORTS	
V1 - V2:	G 3/4
C1 - C2:	3/4 SAE 6000
C3:	G 1/4

Pressione max. (bar)
350



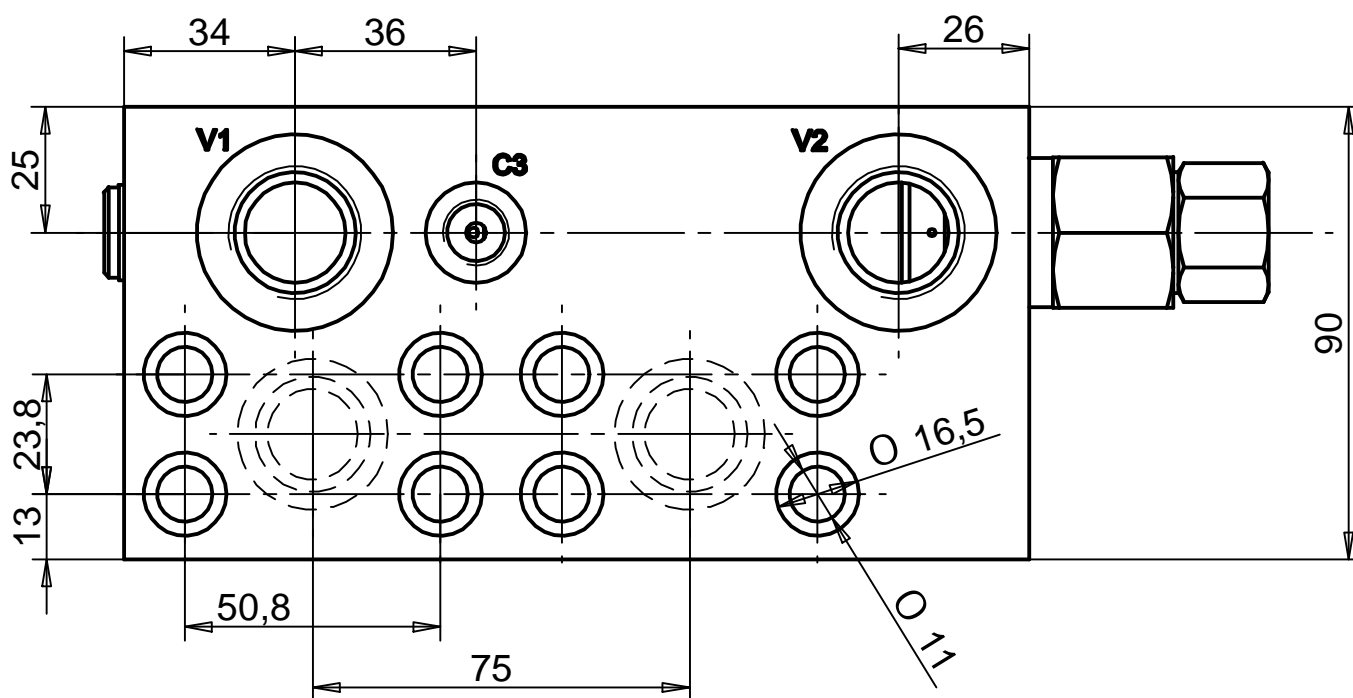
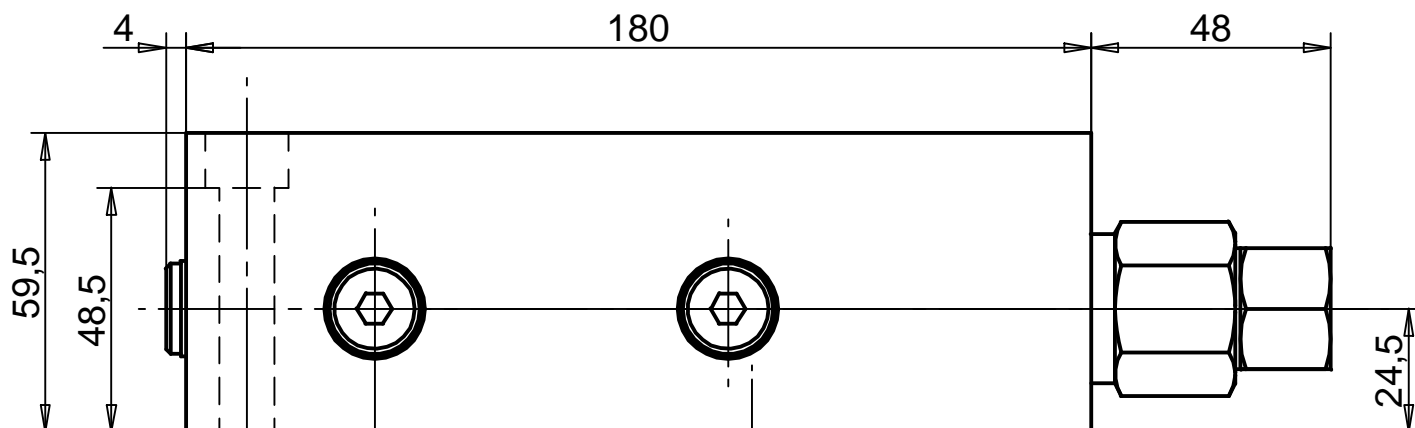
.../S version

.../D version

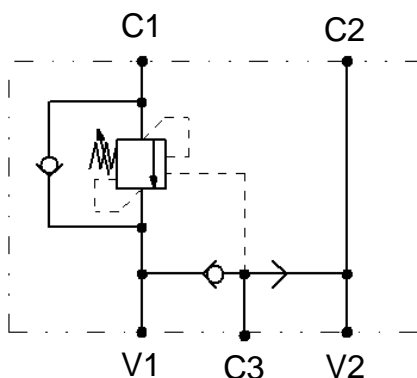
STANDARD: Aluminium body
On request: Zinc plated steel body
(Ord. code: A-...)

Rapp. pilot.
4:1 STANDARD
8:1 On request

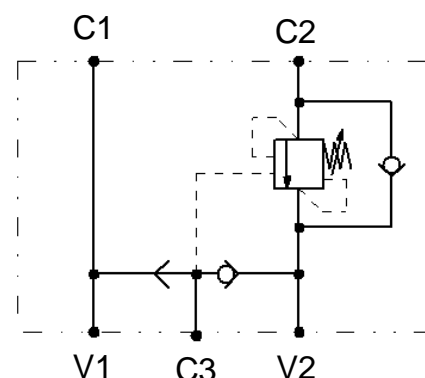
Portata max. (l/min)
120



ATTACCHI / PORTS	
V1 - V2:	G 3/4
C1 - C2: 1/2	SAE 6000
C3:	G 1/4



.../LT version



.../RT version

Portata max. (l/min)
120

Pressione max. (bar)
350

Rapp. pilot. STD
4:1



VALV. DI BILANCIAMENTO DOPPIO EFF. CON SBLOCCO  
FRENO FLANGIABILE SU MOTORI LEDUC SERIE MSI 32

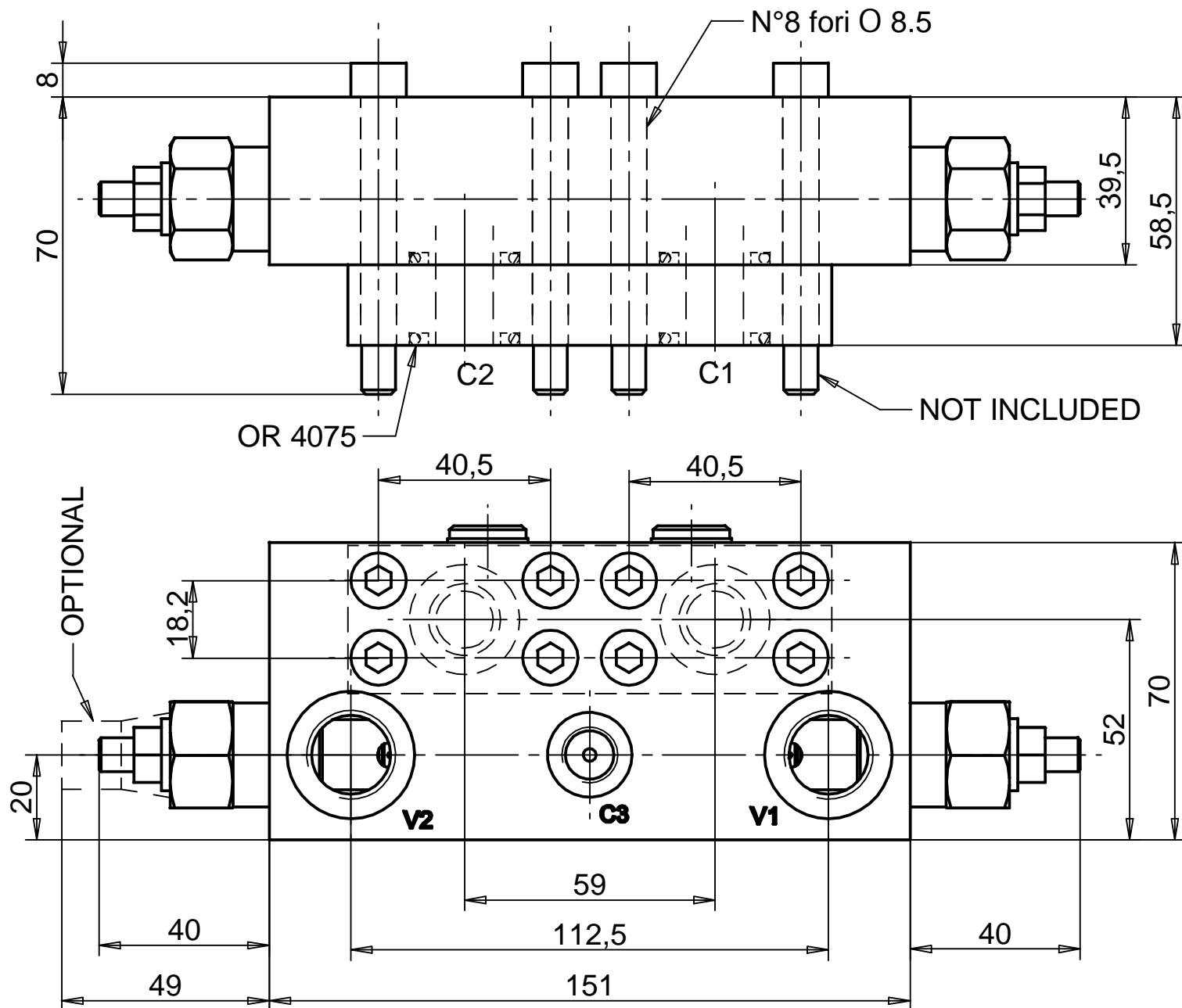
DUAL PILOT ASSISTED OVERCENTRE VALVE, WITH BRAKE UNCLIPPING  
FLANGEABLE ON LEDUC MOTORS " MSI 32" SERIES

Tipo / Type

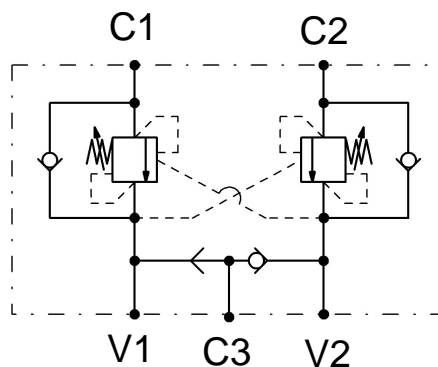
VBDE/TR/FL/RX 120/SF

7

70.50



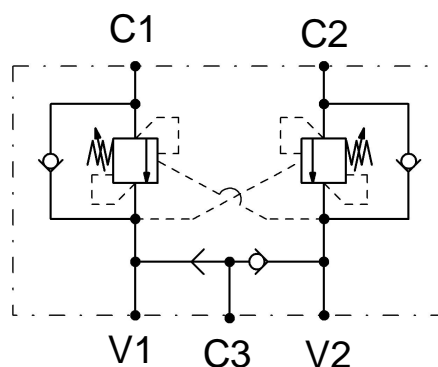
ATTACCHI / PORTS	
V1 - V2:	G 1/2
C1 - C2:	1/2 SAE 6000
C3:	G 1/4



Pressione max. (bar)	
250:	Aluminium body
350:	Zinc plated steel body (Ord. code: A-...)

Rapp. pilot.	
4,2:1	STANDARD
11:1	On request

Portata max. (l/min)	
60	



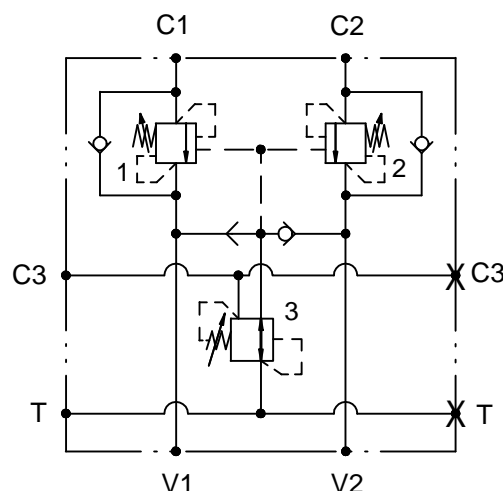
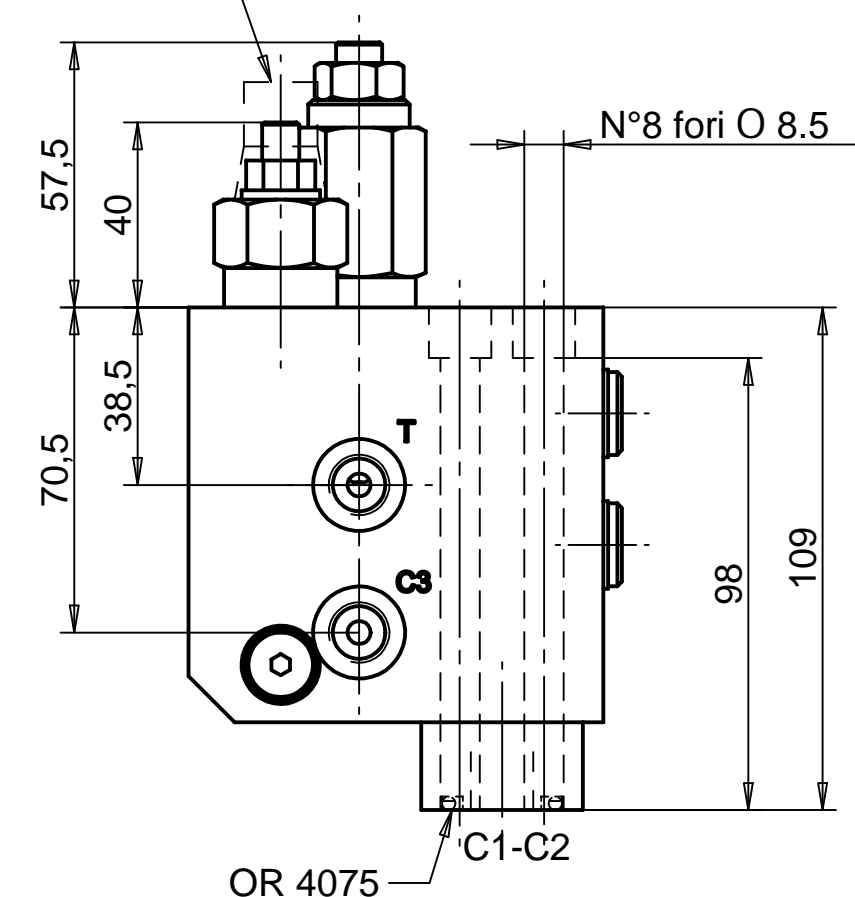
Portata max. (l/min)
90

Tipo / Type VBDE/TR/FL/RX 120/SF/RP

7

71.00

OPTIONAL



Portata max.  
(l/min)

60

Pressione max.  
(bar)

350

ATTACCHI / PORTS

V1 - V2: G 1/2

C1 - C2: 1/2 SAE 6000

C3 - T: G 1/4

Rapp. pilot.

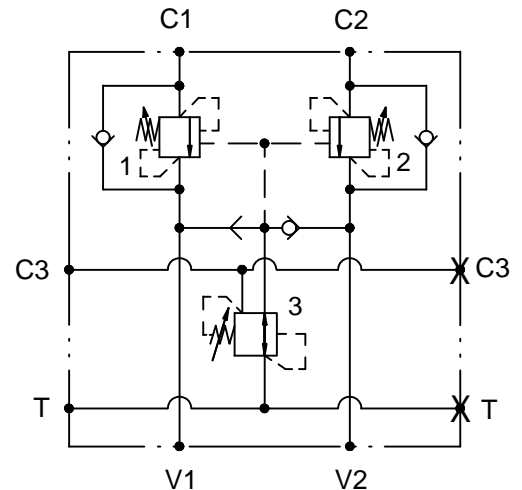
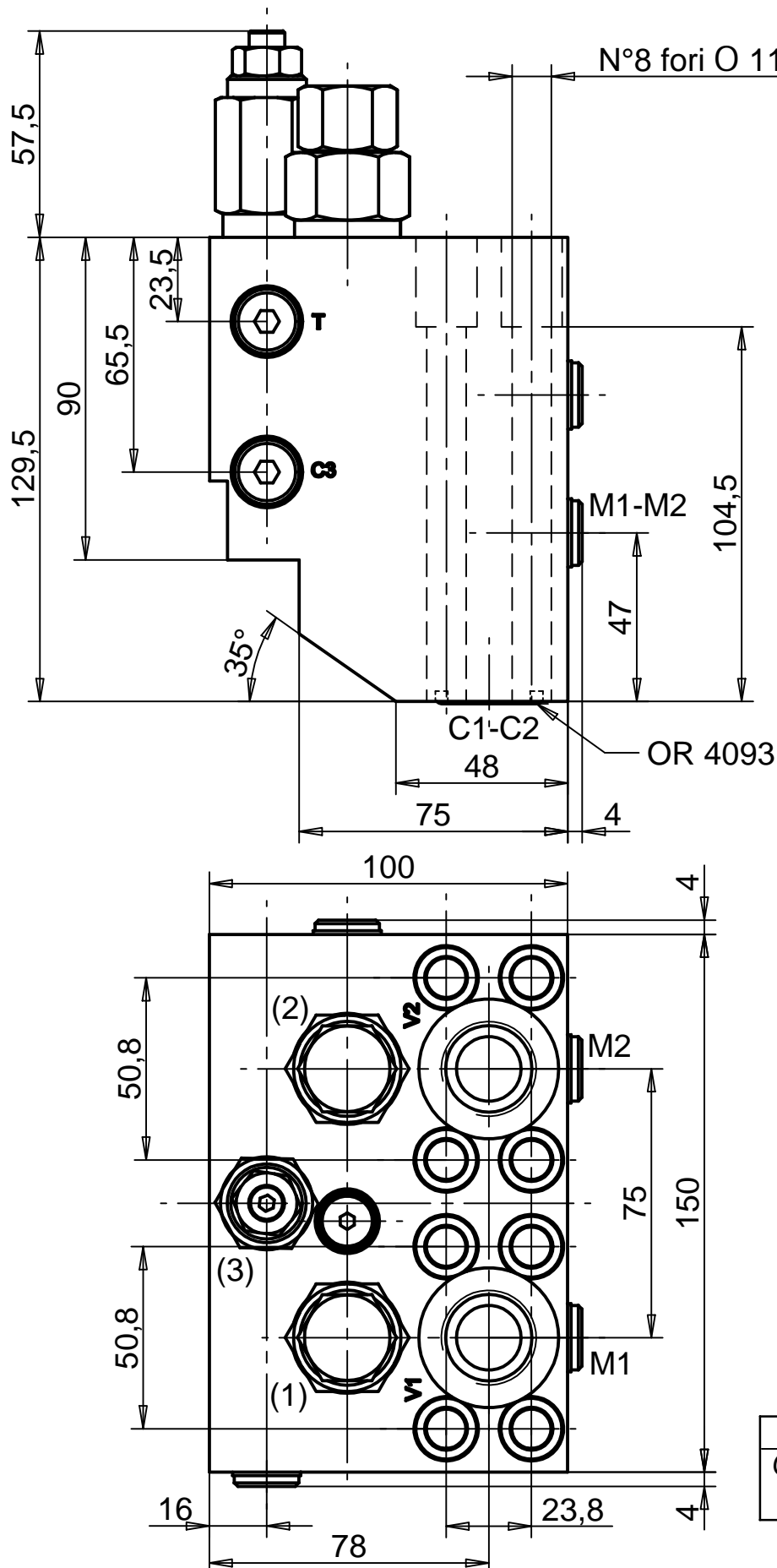
4,2:1 STANDARD

11:1 On request

STANDARD: Aluminium body

On request: Zinc plated steel body  
(Ord. code: A-...)





Portata max. (l/min)
170

Pressione max. (bar)
410

ATTACCHI / PORTS	
V1 - V2:	G 3/4
C1 - C2:	3/4 SAE 6000
C3 - T:	G 1/4

Rapp. pilot.
4:1 STANDARD
8:1 On request

STANDARD: Aluminium body
<i>On request: Zinc plated steel body (Ord. code: A-...)</i>

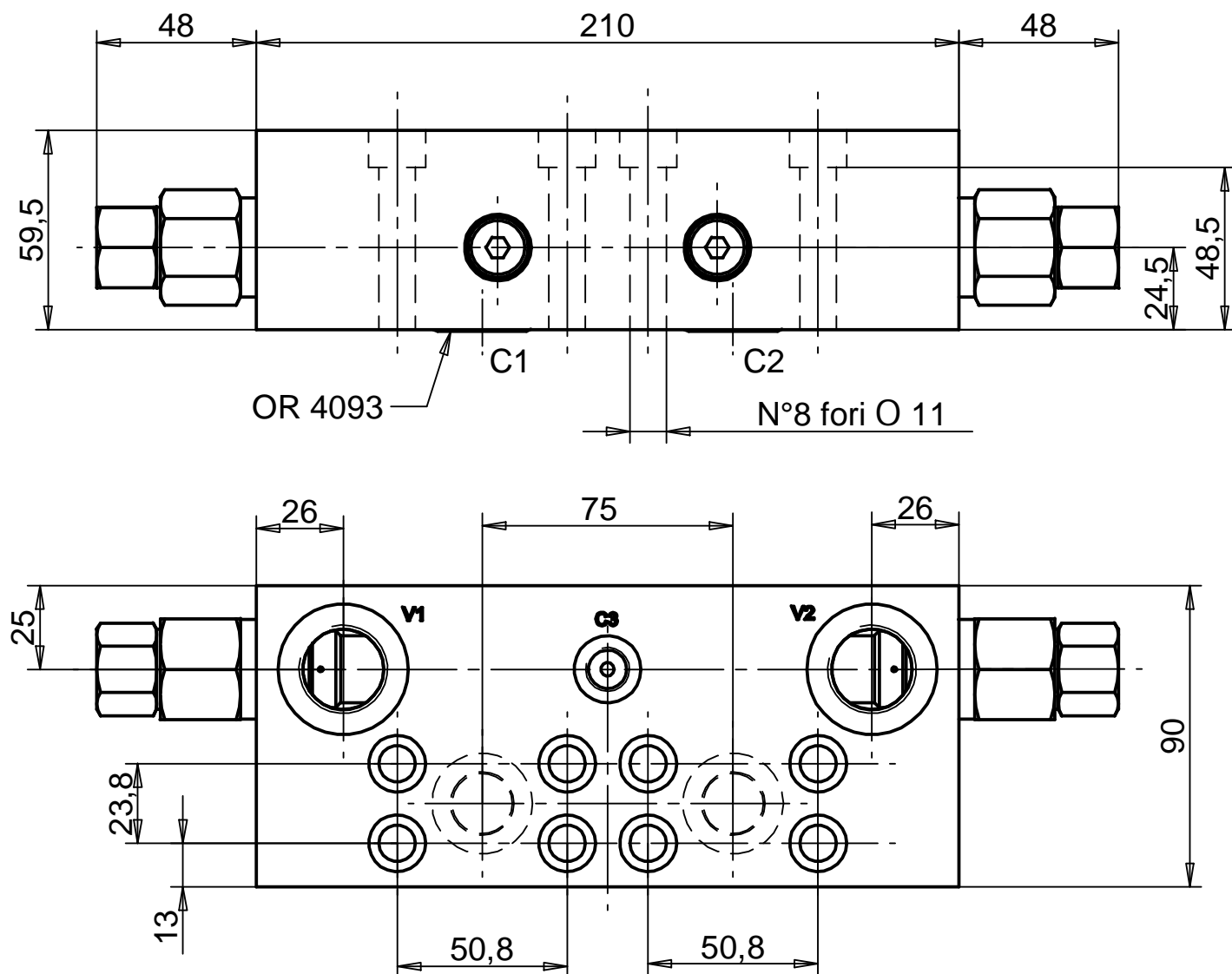


Tipo / Type

VBDE/TE/FL2/RX 340/SF

7

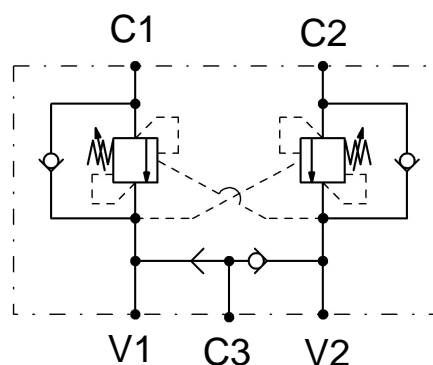
71.15



ATTACCHI / PORTS	
V1 - V2:	G 3/4
C1 - C2:	3/4 SAE 6000
C3:	G 1/4

Pressione max.  
(bar)

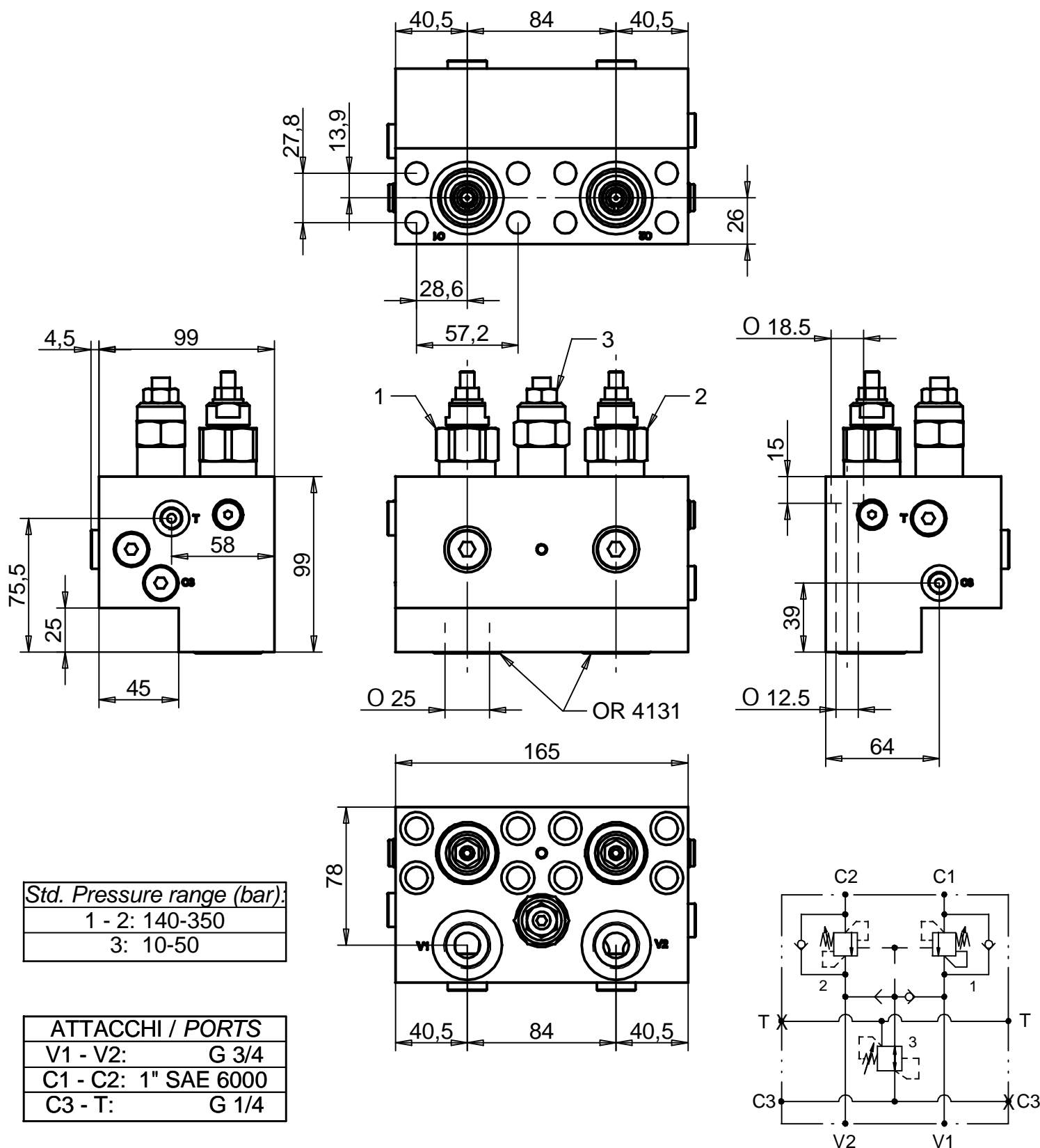
350



STANDARD: Aluminium body  
 On request: Zinc plated steel body  
 (Ord. code: A-...)

Rapp. pilot.  
 4:1 STANDARD  
 8:1 On request

Portata max.  
(l/min)  
 120



Std. Pressure range (bar):

1 - 2: 140-350

3: 10-50

ATTACCHI / PORTS

V1 - V2: G 3/4

C1 - C2: 1" SAE 6000

C3 - T: G 1/4

Portata max.  
(l/min)

120

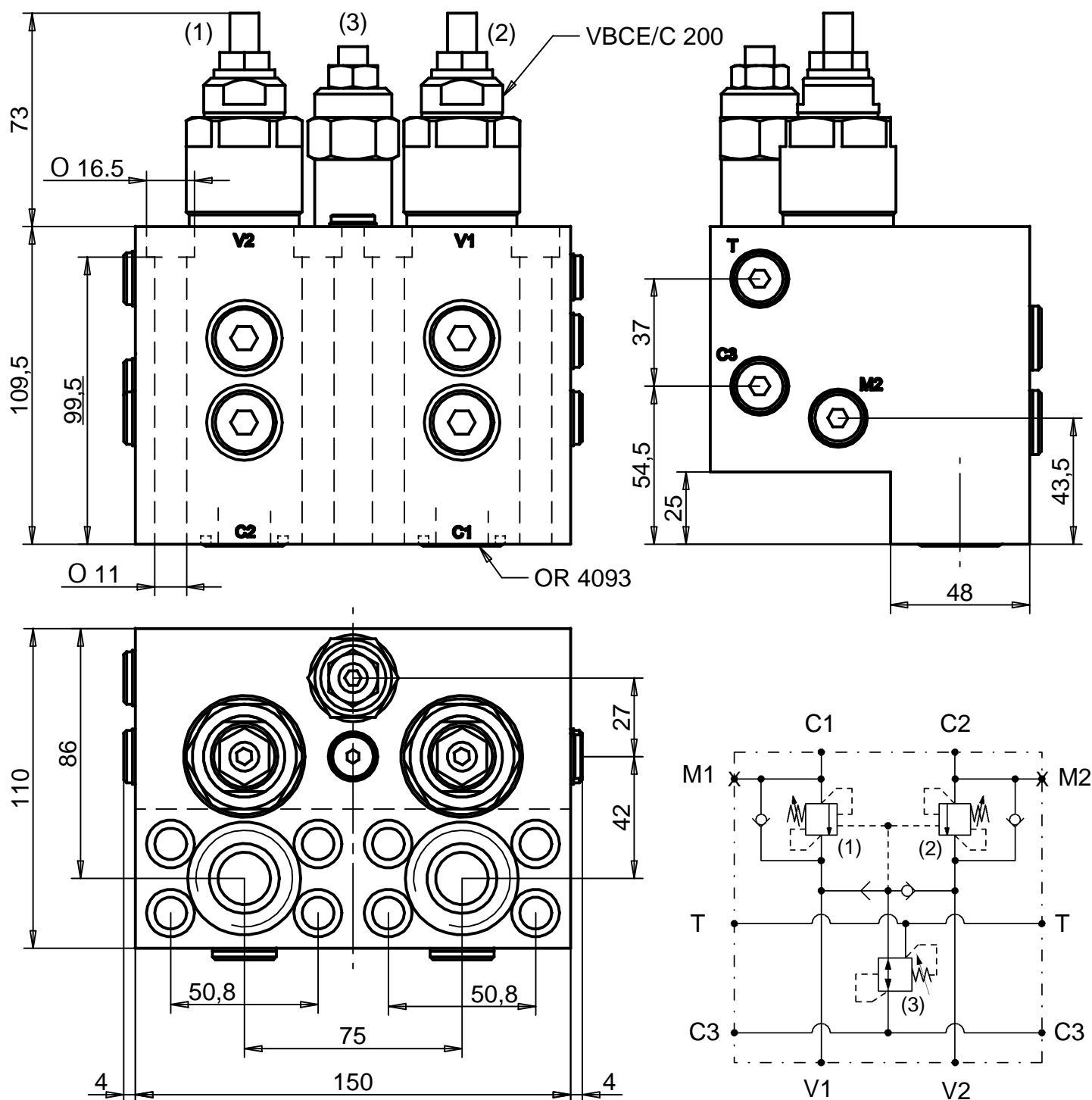
Pressione max.  
(bar)

350

Rapp.  
pilot.

4:1

Collettore in acciaio  
Zincated steel body



ATTACCHI / PORTS

V1 - V2: G 3/4

C1 - C2: 3/4" SAE 6000

C3 - T - M1 - M2: G 1/4

Std. Pressure range (bar):

1 - 2: 140-350

3: 10-50

Portata max.  
(l/min)

200

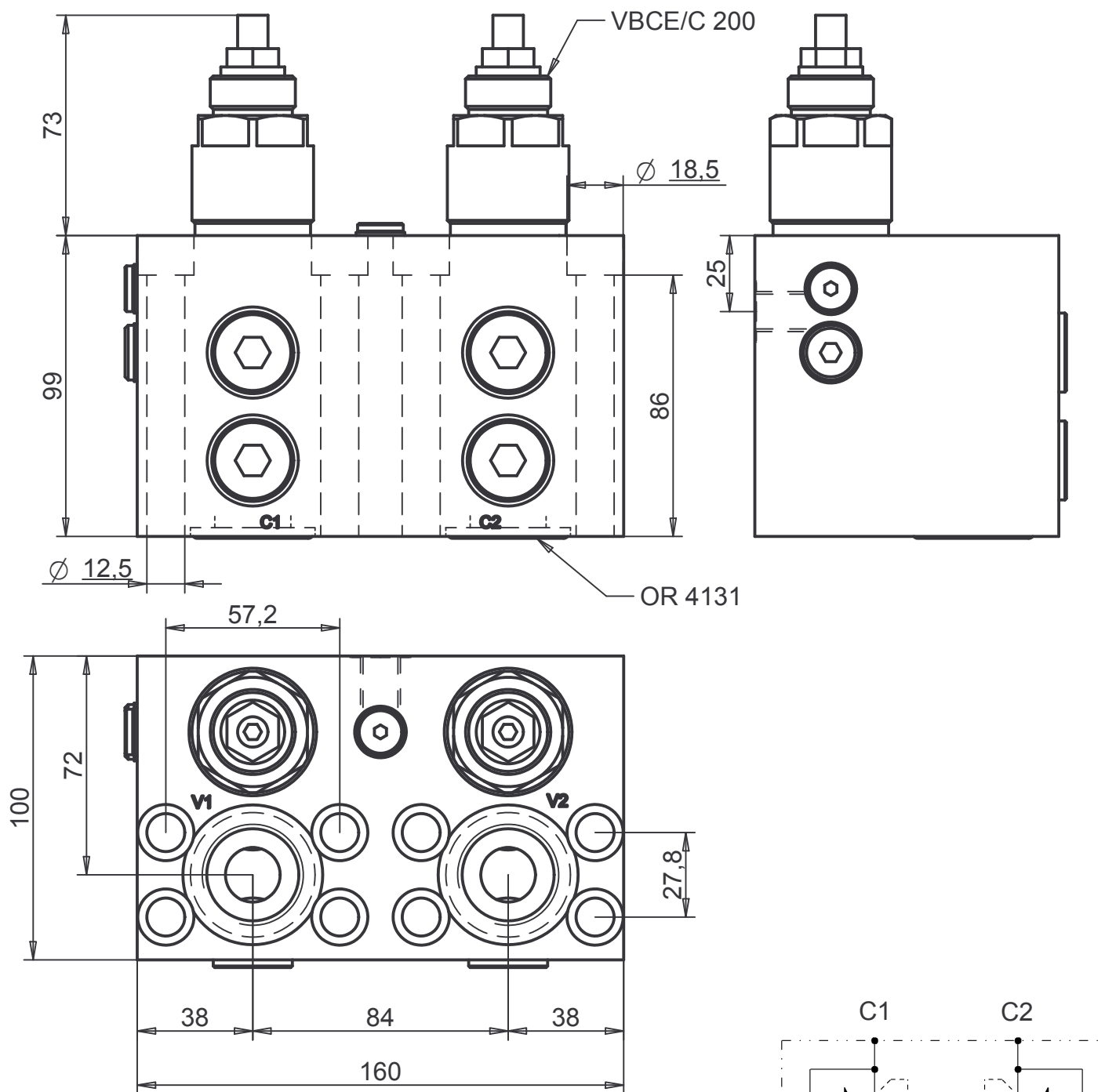
Pressione max.  
(bar)

350

Rapp. pilot.  
Std.

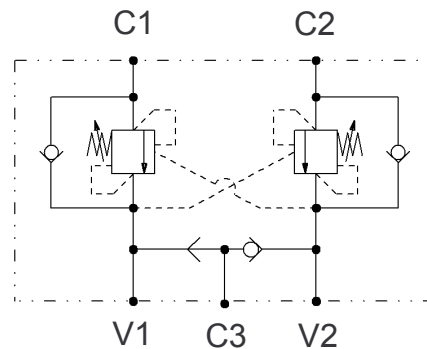
4:1

Collettore in acciaio  
Zincated steel body



ATTACCHI / PORTS	
V1 - V2:	G 1
C1 - C2:	1" SAE 6000
C3:	G 1/4

Std. Pressure range (bar):
1 - 2: 140-350

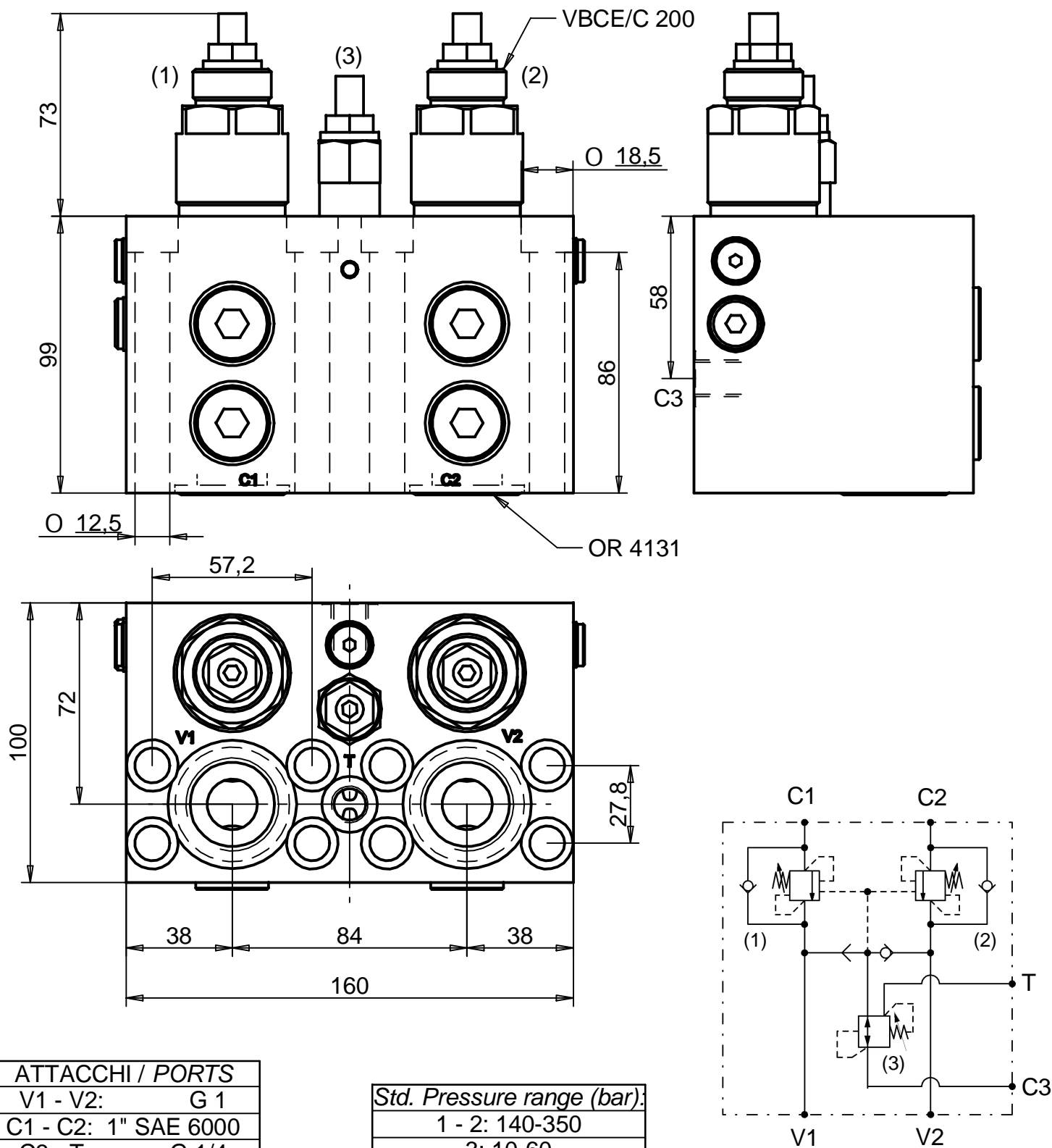


Portata max. (l/min)
200

Pressione max. (bar)
350

Rapp. pilot.
4:1

Collettore in acciaio Zincated steel body
--



ATTACCHI / PORTS	
V1 - V2:	G 1
C1 - C2:	1" SAE 6000
C3 - T:	G 1/4

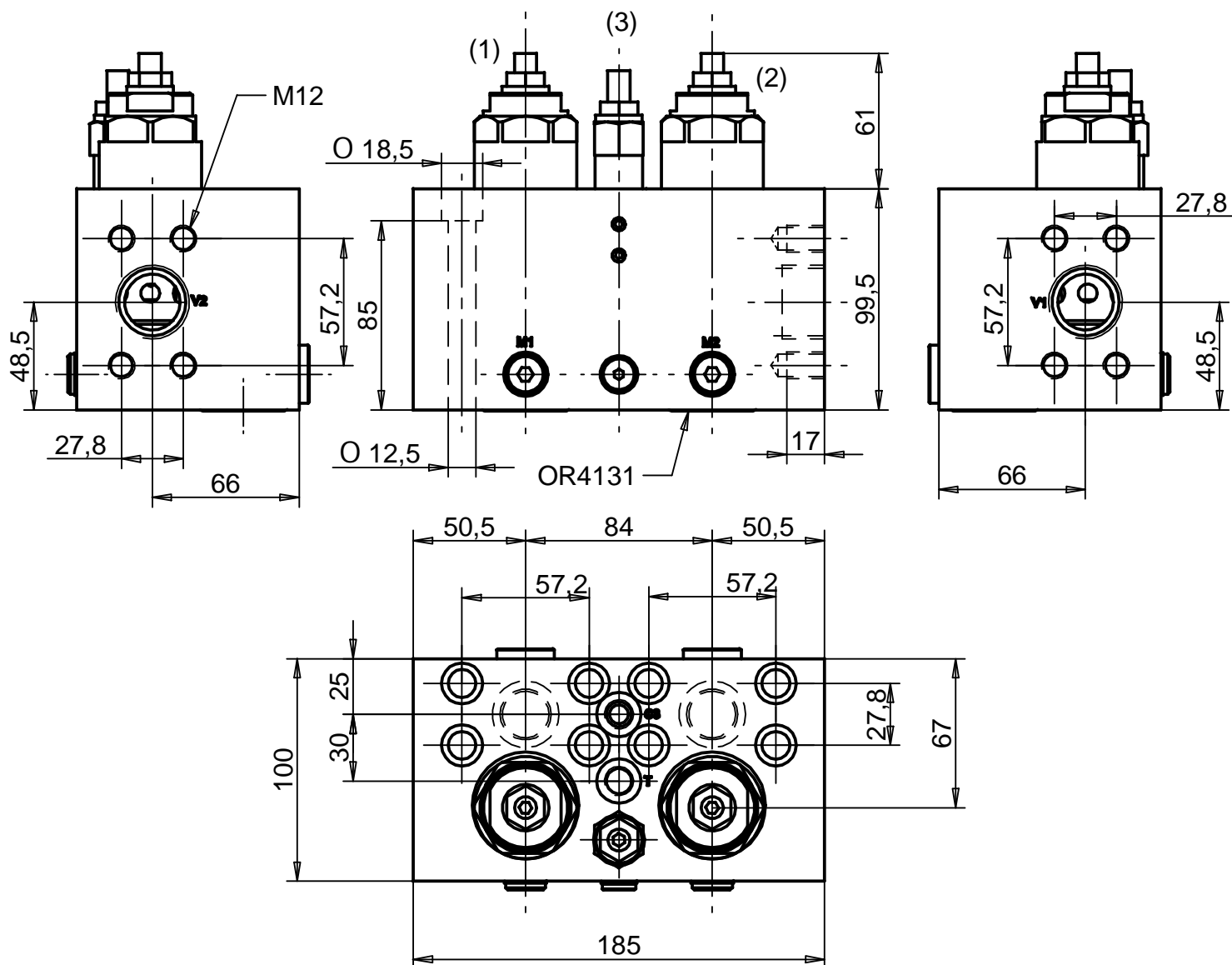
Std. Pressure range (bar):
1 - 2: 140-350
3: 10-60

Portata max. (l/min)
200

Pressione max. (bar)
350

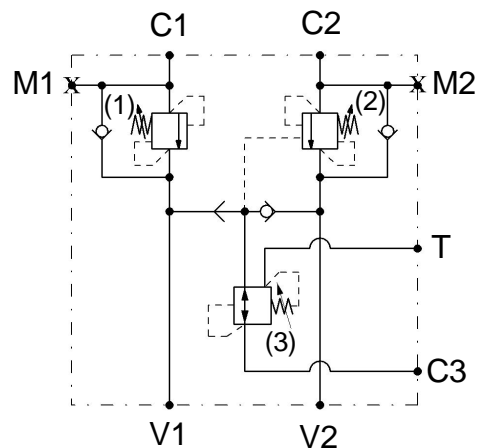
Rapp. pilot.
4:1

Collettore in acciaio Zincated steel body
--



ATTACCHI / PORTS
V1 - V2: 1" SAE 6000
C1 - C2: 1" SAE 6000
C3 - T - M1 - M2: G 1/4

Std. Pressure range (bar):
1 - 2: 140-350
3: 10-50

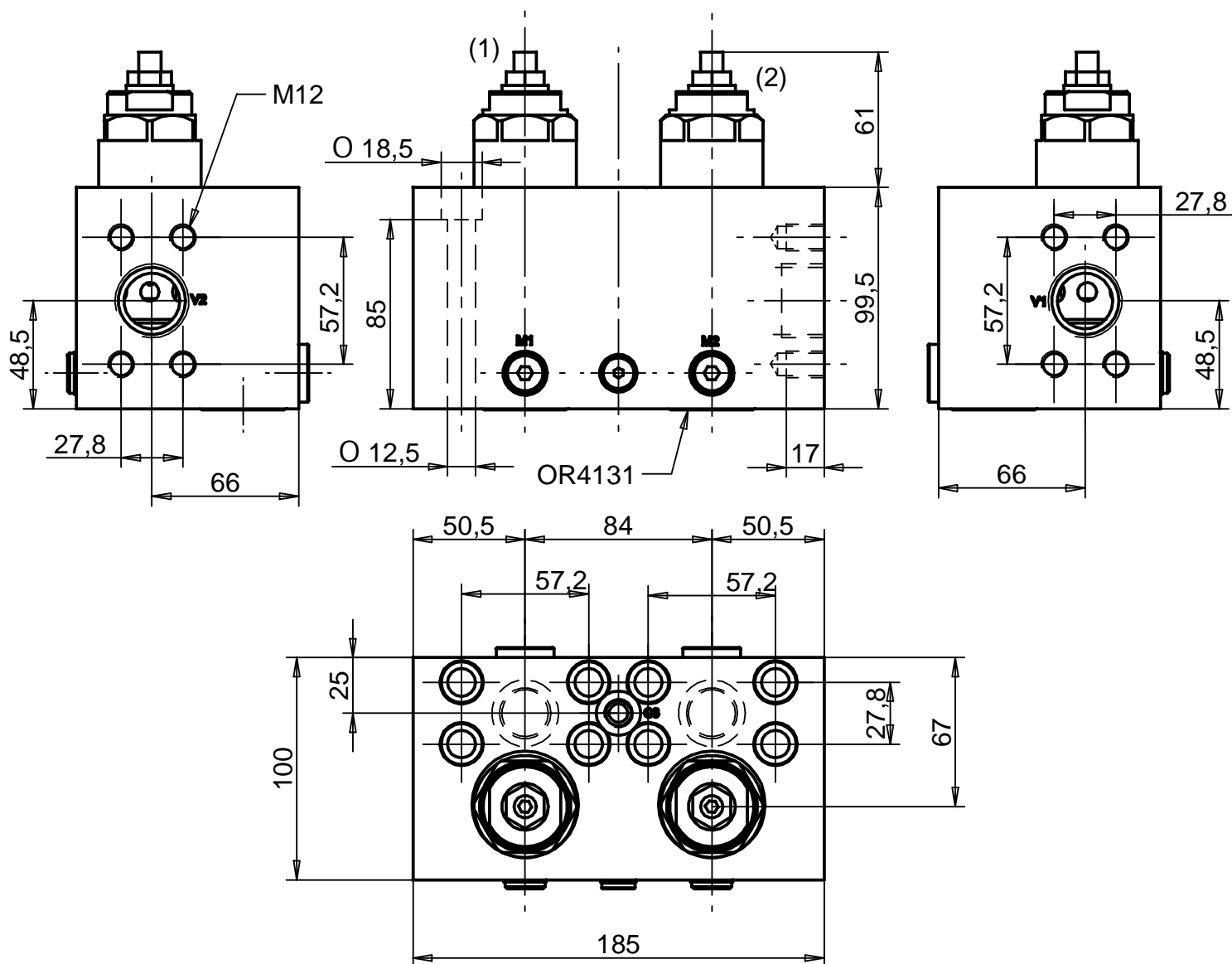


Portata max. (l/min)
320

Pressione max. (bar)
350

Rapp. pilot.
4:1 - STANDARD
8:1 - On request

Collettore in acciaio Zincated steel body
--



ATTACCHI / PORTS

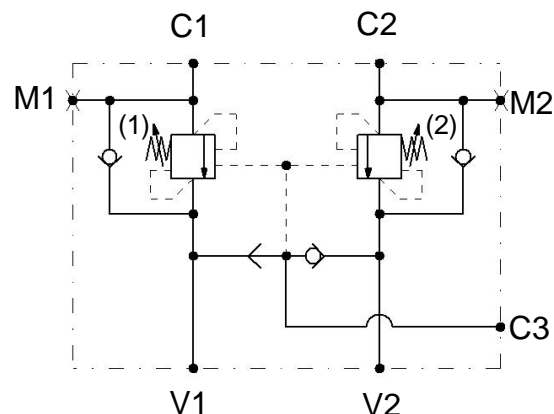
V1 - V2: 1" SAE 6000

C1 - C2: 1" SAE 6000

C3 - M1 - M2: G 1/4

Std. Pressure range (bar):

1 - 2: 140-350



Portata max.  
(l/min)

320

Pressione max.  
(bar)

350

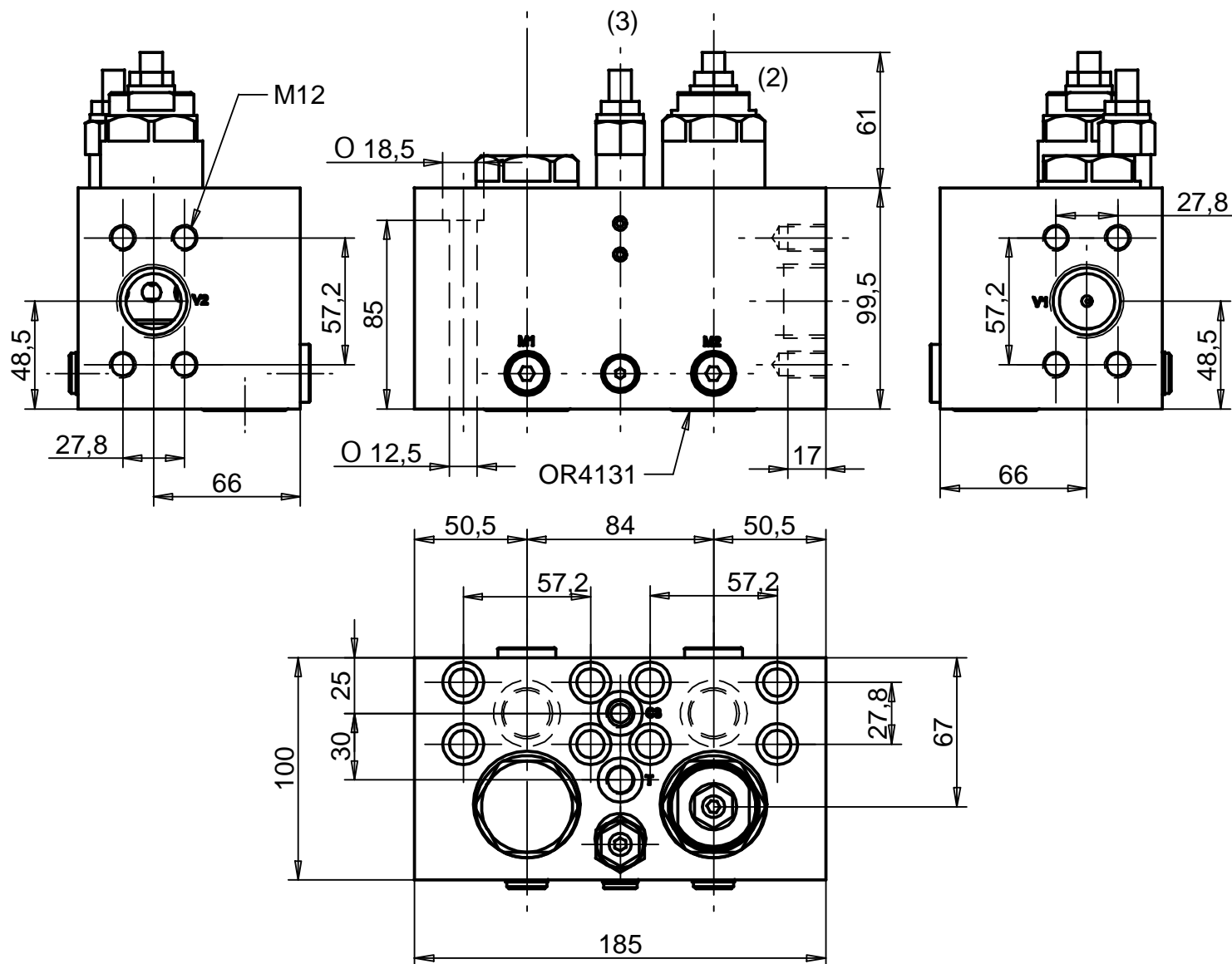
Rapp. pilot.

4:1 - STANDARD

8:1 - On request

Collettore in acciaio  
Zincated steel body





Std. Pressure range (bar):

1 - 2: 140-350

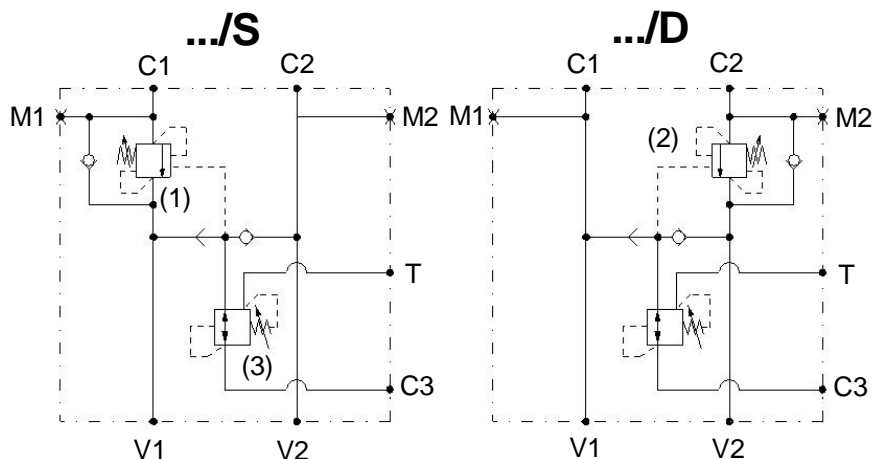
3: 10-50

ATTACCHI / PORTS

V1 - V2: 1" SAE 6000

C1 - C2: 1" SAE 6000

C3 - T - M1 - M2: G 1/4



Portata max.  
(l/min)

320

Pressione max.  
(bar)

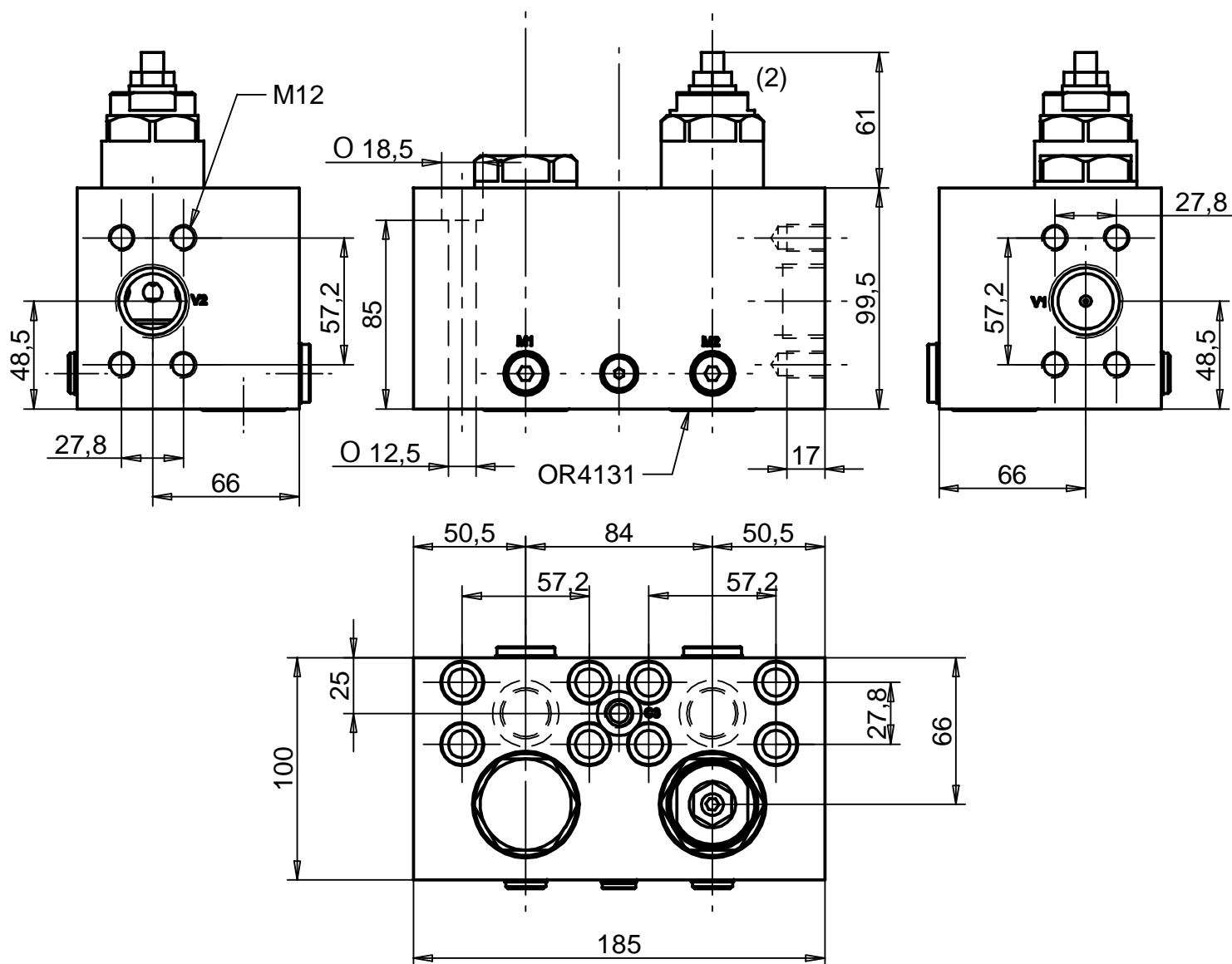
350

Rapp. pilot.

4:1 - STANDARD

8:1 - On request

Collettore in acciaio  
Zincated steel body



Std. Pressure range (bar):

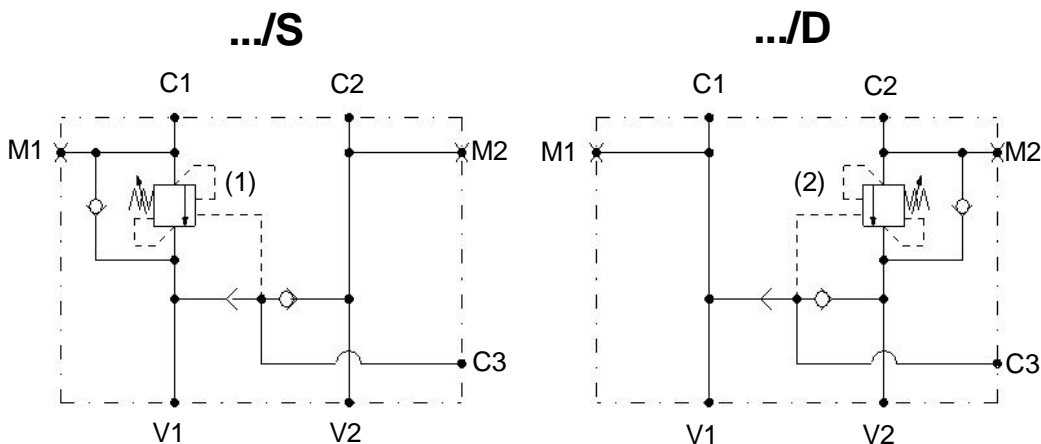
1 - 2: 140-350

ATTACCHI / PORTS

V1 - V2: 1" SAE 6000

C1 - C2: 1" SAE 6000

C3 - M1 - M2: G 1/4



Portata max.  
(l/min)

320

Pressione max.  
(bar)

350

Rapp. pilot.

4:1 - STANDARD

8:1 - On request

Collettore in acciaio  
Zincated steel body